

MishaDecor

# VINYL FLOOR PLANK

LVP · LVT

**Cat. 24** Focus on floor decoration material

Foshan misha decor materials co., ltd  
Add: 1309 jianmei building, Teng long  
road, Nanhai district, Foshan city,  
Guandong, China  
Zip: 528231  
Email: [info@mishadecor.com](mailto:info@mishadecor.com)

# POLYMER VINYL – WOOD GRAIN SERIES

100% virgin material to make stable quality, EN/ISO standard



## SPECIFICATION

Test Item	Test Standard	Test Result
Size	EN 426	7.25"*48"
Thickness	EN 428	2.0mm, 3.0mm, 4.0mm
Wear layer	EN 429	0.2mm, 0.3mm, 0.5mm
Weight	EN 430	3.6kg/m <sup>3</sup> , 5.5kg/m <sup>3</sup> , 8kg/m <sup>3</sup>
Density	EN 437	1800±50kg/m <sup>3</sup>
Wear layer grade	EN 13329	3400 rpm, 3800 rpm, 4600 rpm
	EN 660-2	T Grade
Size stability	EN 434	Shrink ≤0.15%, Buckling ≤1.2mm
Residual depression	EN 433	≤0.1mm
Color fastness	EN ISO 105 B02	≥class 6
Slip resistance	DIN 51130	R9
Fire resistance	EN 13501-1	B1
Sound-absorbing	DIN 52210	5dB
Peel Strength	EN 431	≥80N
Antistatic property	EN 1081-C	Pass



**L-81018**

1220\*184mm(7.25" \*48" ), 2mm/0.2m







L-81011

1220\*184mm(7.25" \*48" ), 2mm/0.2m



L-81012

1220\*184mm(7.25" \*48" ), 2mm/0.2m



L-81003

1220\*184mm(7.25" \*48" ), 2mm/0.2m



L-81019

1220\*184mm(7.25" \*48" ), 2mm/0.2m



L-81005

1220\*184mm(7.25" \*48" ), 2mm/0.2m



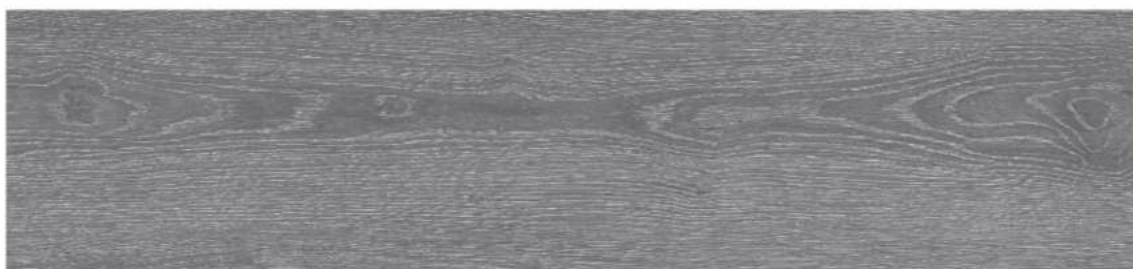
L-81013

1220\*184mm(7.25" \*48" ), 2mm/0.2m



L-81014

1220\*184mm(7.25" \*48" ), 2mm/0.2m



L-81015

1220\*184mm(7.25" \*48" ), 2mm/0.2m



L-81016

1220\*184mm(7.25" \*48" ), 2mm/0.2m



L-81017

1220\*184mm(7.25" \*48" ), 2mm/0.2m





L-81020

1220\*184mm(7.25" \*48" ), 2mm/0.2m



L-81021

1220\*184mm(7.25" \*48" ), 2mm/0.2m



L-81022

1220\*184mm(7.25" \*48" ), 2mm/0.2m



L-81023

1220\*184mm(7.25" \*48" ), 2mm/0.2m



L-81024

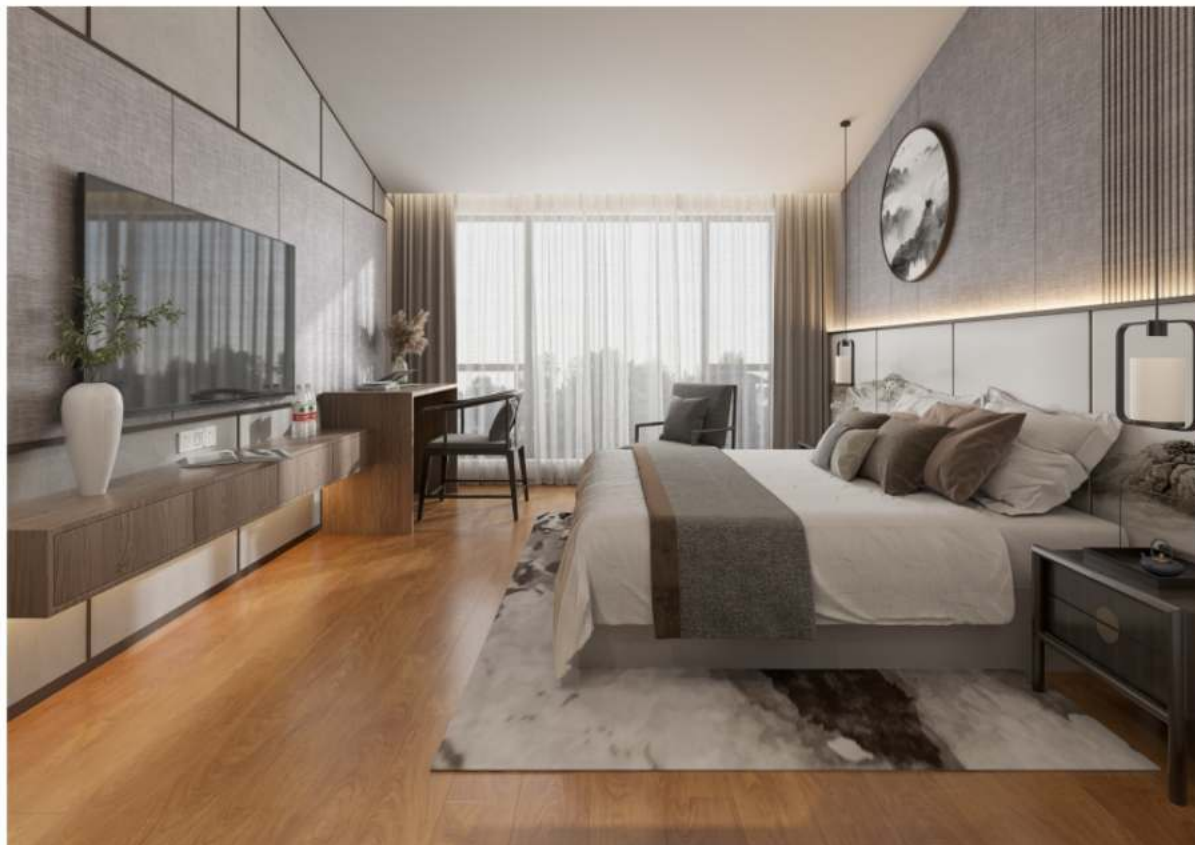
1220\*184mm(7.25" \*48" ), 2mm/0.2m



■ L-81013  
Thickness: 2.0mm, 3.0mm, 4.5mm  
Wear layer: 0.2mm, 0.3mm, 0.5mm



■ L-81011  
Thickness: 2.0mm,  
3.0mm, 4.5mm  
Wear layer: 0.2mm,  
0.3mm, 0.5mm



■ L-81021  
Thickness: 2.0mm,  
3.0mm, 4.5mm  
Wear layer: 0.2mm,  
0.3mm, 0.5mm

